

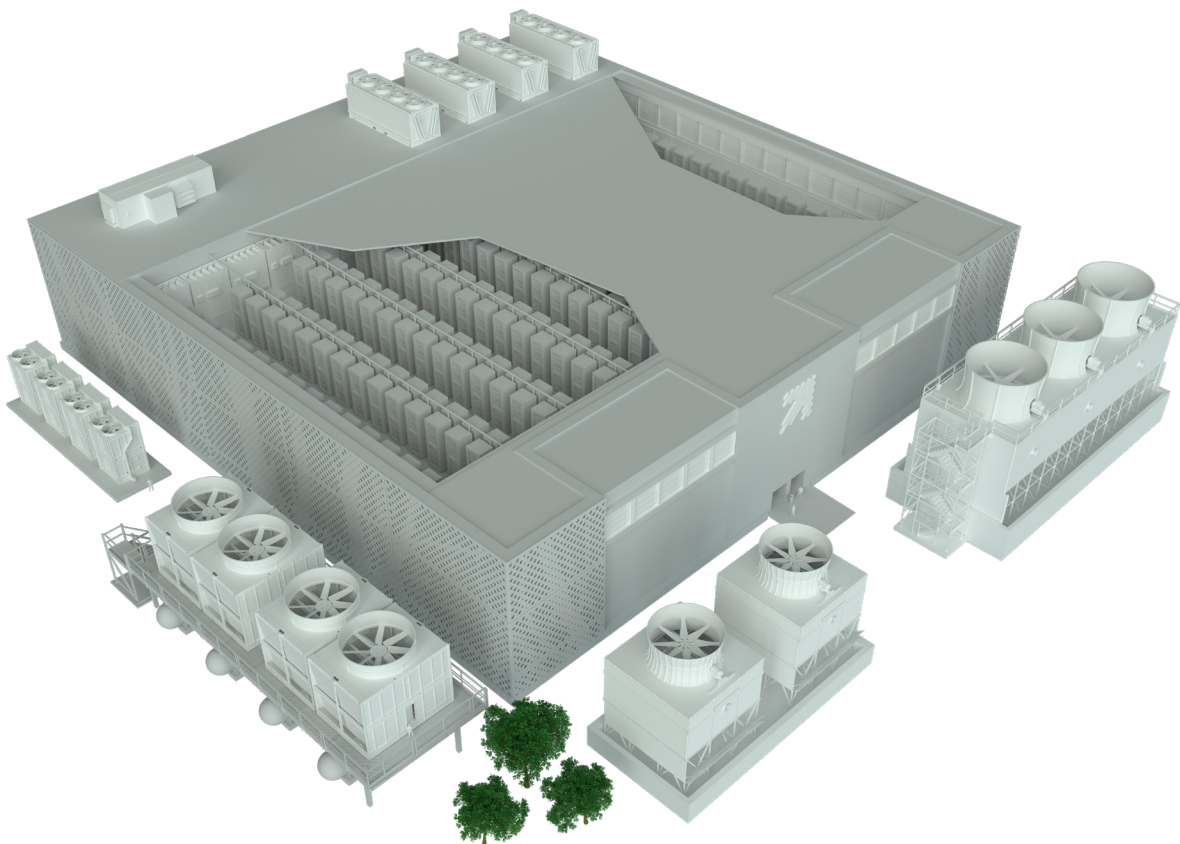
MARLEY® Data Center Portfolio

Sustainable Solutions for the
Data Center Ecosystem



Scale Up Data Center Capacity with Efficient Cooling Solutions from Marley®

Marley is your trusted partner for scalable, energy-and water-efficient cooling options, tailored to the high-density, high-performance demands of modern data centers. For your facility to operate at its peak, you need reliable solutions tailored to meet your data center cooling needs—without sacrificing your environmental goals.

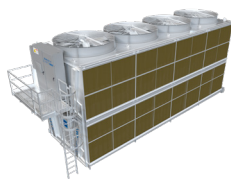


RELIABLE COOLING FOR MODERN NEEDS

With a range of scalable, modular options, and a long history of reliable performance, Marley cooling solutions are an excellent fit for high-density data center environments. Marley offers a complete portfolio of heat rejection equipment to meet your data center cooling needs:



Dry Coolers



Adiabatic Fluid Coolers



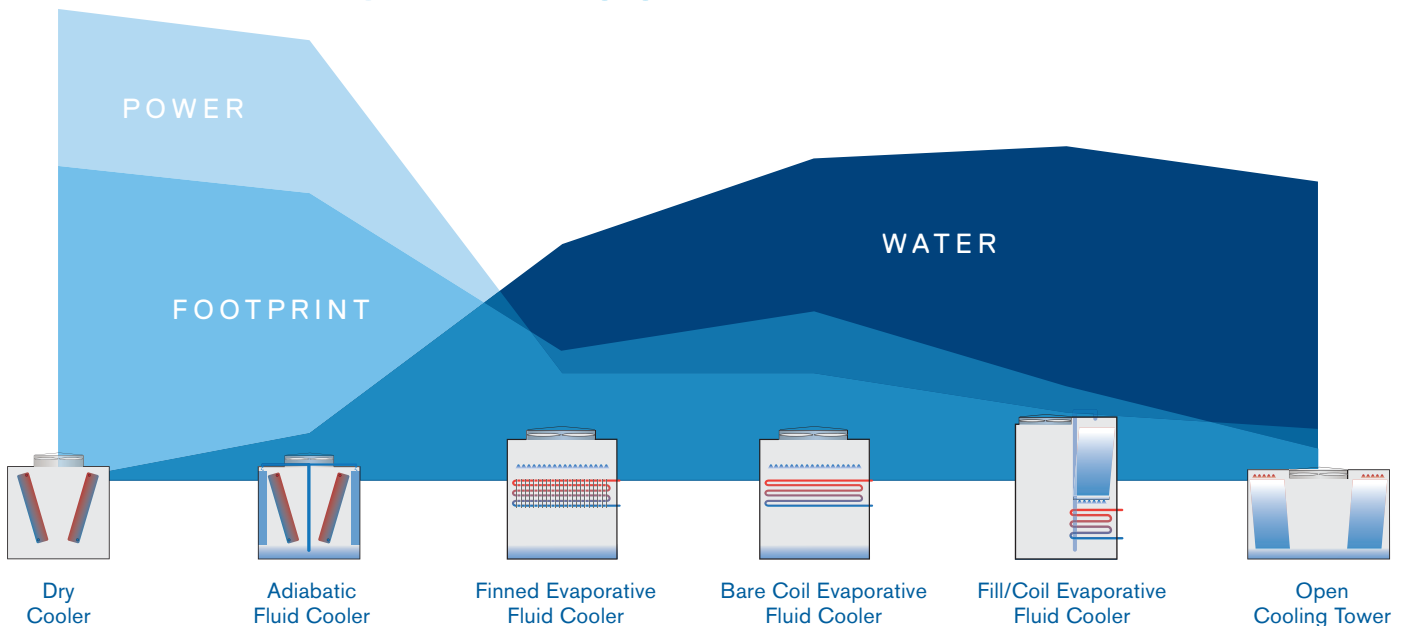
Evaporative Fluid Coolers



Cooling Towers

PRODUCT PORTFOLIO

POWER • FOOTPRINT • WATER



A FULL RANGE OF COOLING SOLUTIONS

- ✔ **Optimize energy and water use** with a broad cooling portfolio to meet your sustainability and operational goals
- ✔ **Maximize data center performance** with proven, scalable solutions designed for mission-critical uptime with the capability for onsite future upgrades
- ✔ **Minimize footprint** with high-capacity cells and compact configurations
- ✔ **Simplify global deployment** with consistent designs, proven technologies and responsive support across all your sites

Marley OlympusMAX™ Dry Fluid Cooler

The Marley OlympusMAX™ Dry Fluid Cooler provides the ultimate high-capacity, dry fluid cooler performance for data centers.

OlympusMAX dry fluid cooler products are designed to provide a reliable heat rejection solution in various conditions while eliminating site water use.

CONSERVES WATER

Zero onsite water usage

HIGH DENSITY DRY COOLING

Modular design maximizes sensible heat rejection per footprint

RELIABILITY

Proven gear drive fans provide reliable operation and help limit onsite maintenance

BUILT FOR QUALITY

Robust, industrial-grade construction, designed for lasting performance

FLEXIBILITY FOR CHANGING DEMANDS

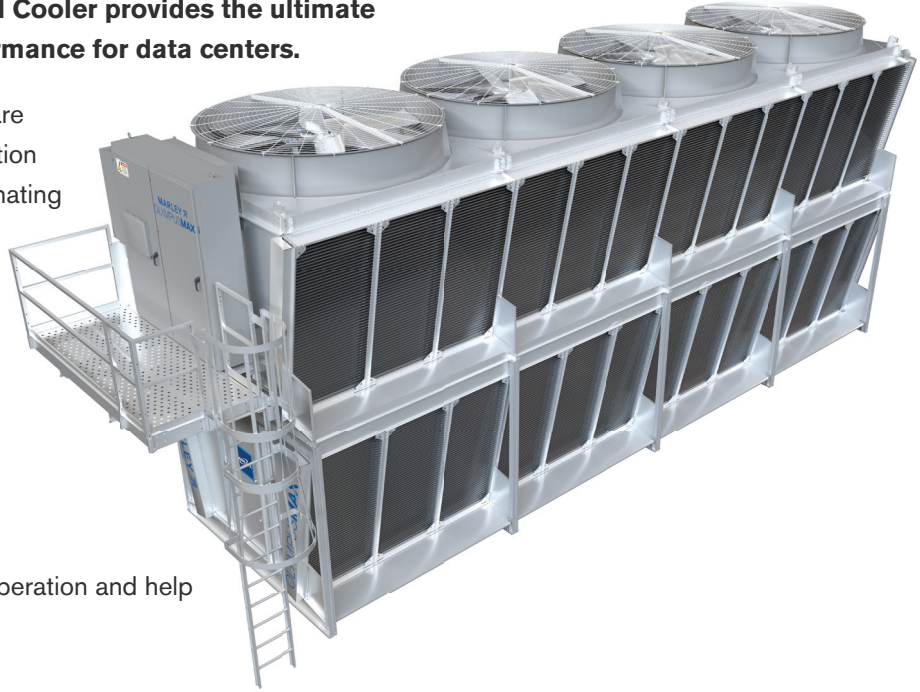
Bolt-on adiabatic modules can be added later when your capacity needs increase

EASE OF SERVICEABILITY

Standard full size access doors and internal walkways provides access to all key components

STREAMLINED INSTALLATION

Factory-installed VFD & controls with industry-standard, single-point power connection allow for easier installation and simplified scalability



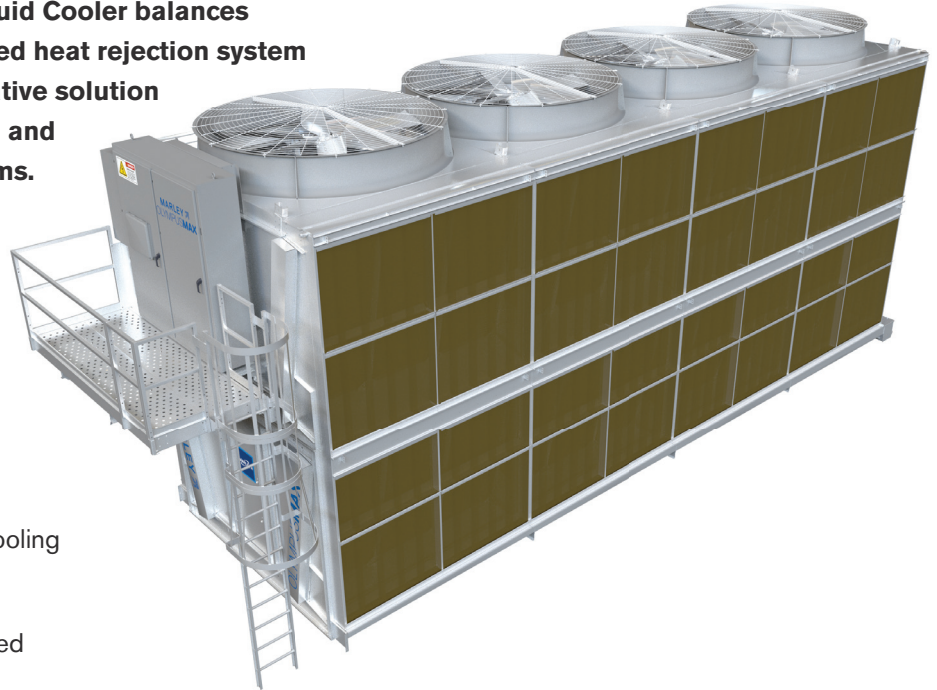
Model	Cooling Capacity*	Maximum Flow Rate	Length	Width	Height
DWSA4	670 tons (2945 kW)	5476 gpm (1243 m ³ /hr)	41'-4" (12.6m)	12'-0" (3.6m)	20'-6" (6.2m) to 25'-6" (7.8m)

*Based on 3 gpm/ton at 115°F HW—105°F CW—95°F DB; varies depending on application

Marley OlympusMAX™ Adiabatic Fluid Cooler

The Marley OlympusMAX™ Adiabatic Fluid Cooler balances the water-saving benefits of an air-cooled heat rejection system with the energy efficiency of an evaporative solution to provide flexible cooling for operators and engineers of HVAC and industrial systems.

OlympusMAX adiabatic cooling products are designed to provide a reliable heat rejection solution in various conditions – even in hot, dry environments – and are highly effective in both water conservation (dry) and energy conservation (wet) modes.



CONSERVES WATER

Minimal onsite water usage vs evaporative cooling

SAVES ENERGY

Limits onsite energy consumption vs air-cooled

EXTENDS EFFICIENCY

Unique recirculating water system improves adiabatic efficiency and extends pad life

FLEXIBLE OPERATION

User-friendly controls to regulate water/energy usage

BUILT FOR QUALITY

Robust construction, designed for lasting performance

EASE OF SERVICEABILITY

Standard full size access doors and internal walkways provides access to all key components

STREAMLINED INSTALLATION

Factory-installed VFD & controls with industry-standard, single-power connection allow for easier installation and simplified scalability

Model	Cooling Capacity*	Maximum Flow Rate	Length	Width	Height
VWSA4	733 tons (3222 kW)	5476 gpm (1243 m ³ /hr)	41'-4" (12.6m)	14'-0" (4.3m)	20'-6" (6.2m) to 25'-6" (7.8m)

*Based on 3 gpm/ton at 105°F HW—95°F CW—95°F DB—75°F WB ; varies depending on application

Marley MH Fluid Cooler

Utilizing a combination of fill media and prime surface coil(s), the MH Fluid Cooler offers significantly improved performance over conventional closed-circuit coolers.

INDUSTRY LEADING COOLING CAPACITY

Featuring the highest cooling capacity per unit of any CTI Certified fluid cooler in the industry, the Marley MH Fluid Cooler sets the benchmark for efficient, space-saving closed loop cooling.

HIGHEST CLOSED CIRCUIT HEAT REJECTION DENSITY

Engineered with high-performance heat transfer coils and a hybrid evaporative design, the Marley MH Fluid Cooler provides the highest closed-circuit heat rejection density available – delivering more cooling per square foot than other fluid coolers.

LOWEST CLOSED CIRCUIT CONNECTED POWER

Designed to do more with less, the MH Fluid Cooler's advanced fill / coil configuration and high-efficiency components provide consistent, reliable cooling with low input power.



Model	Cooling Capacity*	Maximum Flow Rate	Length	Width	Height
MHF7101	80 tons (352 kW)	399 gpm (90 m ³ /hr)	6'-1" (1.9m)	8'-4" (2.5m)	12'-11" (3.9m) to 14'-5" (4.4m)
MHF7103	151 tons (664 kW)	798 gpm (181 m ³ /hr)	9'-1" (2.8m)	8'-4" (2.5m)	14'-7" (4.4m) to 20'-3" (6.2m)
MHF7105	210 tons (923 kW)	1056 gpm (240 m ³ /hr)	12'-1" (3.7m)	8'-4" (2.5m)	14'-7" (4.4m) to 20'-3" (6.2m)
MHF7107	315 tons (1385 kW)	2112 gpm (480 m ³ /hr)	12'-1" (3.7m)	11'-11" (3.6m)	17'-5" (5.3m) to 22'-5" (6.8m)
MHF7109	494 tons (2172 kW)	3002 gpm (682 m ³ /hr)	18'-1" (5.5m)	11'-11" (3.6m)	17'-5" (5.3m) to 22'-5" (6.8m)
MHF7111	645 tons (2835 kW)	7010 gpm (1592 m ³ /hr)	11'-11" (3.6m)	23'-10" (7.3m)	21'-6" (6.6m) to 23'-6" (7.2m)
MHF7113	812 tons (3569 kW)	7330 gpm (1665 m ³ /hr)	13'-11" (4.2m)	25'-10" (7.9m)	21'-6" (6.6m) to 23'-6" (7.2m)

*Based on 3 gpm/ton at 95°F HW - 85°F CW - 78°F WB; varies depending on configuration

Marley DT Fluid Cooler

The DT Fluid Cooler with Aero-X™ coil technology provides seasonal dry operation flexibility that fill/coil hybrid coolers cannot.

SEASONAL/COLD AMBIENT DRY OPERATION

Whether the goal is to reduce site water usage, lower treatment costs, or simplify cold-weather operation, the DT Fluid Cooler's seasonal dry operation capability delivers exceptional flexibility without compromising performance.

BEST-IN-CLASS EVAPORATIVE PERFORMANCE

With its advanced, streamlined tube coil design, the Marley DT Fluid Cooler leads all bare-tube coil-only fluid coolers in nominal heat rejection per footprint, balancing exceptional evaporative performance with dry operation flexibility.

BARE-TUBE AND FINNED-TUBE MODELS

Optional finned coils boost evaporative performance by up to 30% and enable dry operation at up to 20°F higher ambient temperatures versus bare-tube models.



Model	Cooling Capacity*	Maximum Flow Rate	Length	Width	Height
DTW8509	145 tons (637 kW)	1800 gpm (409 m ³ /hr)	9'-0" (2.7m)	8'-6" (2.6m)	12'-0" (3.7m) to 15'-10" (4.8m)
DTW8512	171 tons (752 kW)	1800 gpm (409 m ³ /hr)	12'-0" (3.7m)	8'-6" (2.6m)	12'-4" (3.8m) to 16'-2" (4.9m)
DTW1012	196 tons (862 kW)	1800 gpm (409 m ³ /hr)	12'-1" (3.7m)	9'-11" (3.0m)	14'-9" (4.5m) to 18'-10" (5.7m)
DTW1212	251 tons (1103 kW)	1800 gpm (409 m ³ /hr)	12'-1" (3.7m)	11'-11" (3.6m)	14'-9" (4.5m) to 18'-10" (5.7m)
DTW1018	282 tons (1240 kW)	1800 gpm (409 m ³ /hr)	18'-2" (5.5m)	9'-11" (3.0m)	15'-9" (4.8m) to 19'-10" (6.1m)
DTW1218	382 tons (1679 kW)	1800 gpm (409 m ³ /hr)	18'-2" (5.5m)	11'-11" (3.6m)	16'-1" (4.9m) to 20'-2" (6.2m)

*Based on 3 gpm/ton at 95°F HW—85°F CW—78°F WB; varies depending on configuration

Marley NC and NC Everest® Cooling Towers

Remarkable Cooling Tower with Industry Leading Cooling Capacity Using Up to 35% Less Fan Power*

PEAK PERFORMANCE AND MAXIMUM EFFICIENCY

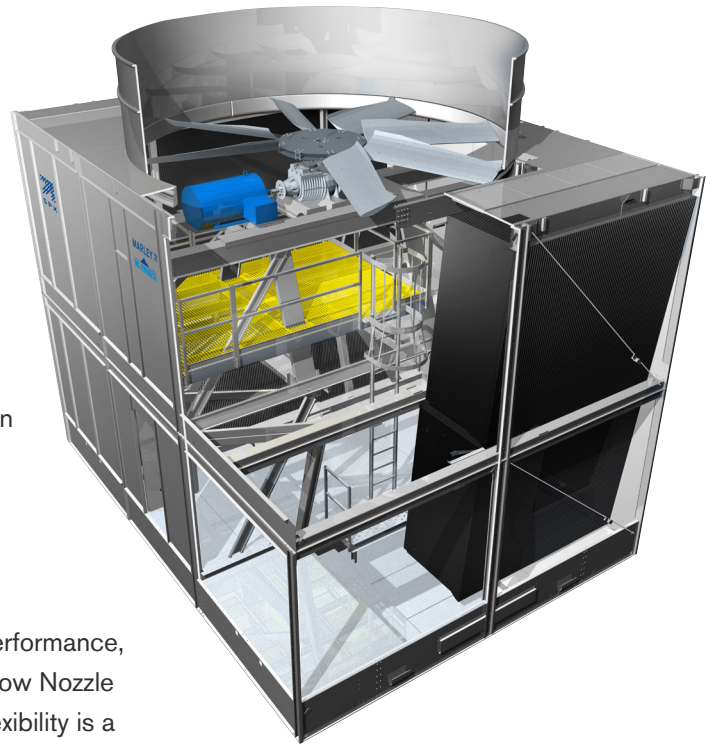
Marley's NC Everest delivers the most cooling capacity of any factory-assembled crossflow cooling tower on the market with 50% more heat rejection than the nearest comparison. The NC and NC Everest feature Marley's MX75 PVC film fill which has been honed over decades of research and design efforts to deliver the most effective fill offering ever. The basins are gravity fed, reducing the pump power requirements and saving even more electricity.

FLOW RATE FLEXIBILITY

To enable a maximum range of flows while still providing optimal performance, the NC and NC Everest can be outfitted with MarleyGard™ Low-Flow Nozzle Cups to operate at rates as low as 30% of the design flow. This flexibility is a substantial advantage over counterflow designs, which are typically limited to no less than 70% of design flow. Nozzle cups also dramatically improve the cold weather operability of the tower, reducing freezing risk and ensuring continuous cooling.

BEST-IN-CLASS MAINTENANCE ACCESS

The unrivaled access of Marley's crossflow design allows for easier and safer inspections and maintenance. NC Everest access features include 7-foot-high doors and interior access platforms to help operators reach necessary components more efficiently.



Model**	Cooling Capacity***	Maximum Flow Rate	Length	Width	Height
NC8407	198 tons (870 kW)	594 gpm (135 m³/hr)	6'-6" (2m)	12'-10" (3.9m)	10'-2" (3.1m)
NC8409	829 tons (3644 kW)	2487 gpm (565 m³/hr)	13'-10" (4.2m)	22'-5" (6.8m)	11'-11" (3.6m)
NC8411	984 tons (4326 kW)	2952 gpm (670 m³/hr)	11'-10" (3.6m)	22'-5" (6.8m)	18'-10" (5.7m)
NC8412	1200 tons (5275 kW)	3600 gpm (818 m³/hr)	13'-10" (4.2m)	22'-5" (6.8m)	18'-10" (5.7m)
NC8414	1400 tons (6154 kW)	4200 gpm (954 m³/hr)	13'-10" (4.2m)	22'-5" (6.8m)	27'-1" (8.3m)
NC8422	2189 tons (9623 kW)	7746 gpm (1759 m³/hr)	22'-5" (6.8m)	29'-6" (9m)	27'-1" (8.3m)

*Compared to other single-cell, factory-assembled crossflow cooling towers

**Additional models available

***Based on 3 gpm/ton at 95°F HW—85°F CW—78°F WB; varies depending on configuration

Marley MD and MD Everest® Cooling Towers

Optimize Installation and Performance through Modular Assembly and Advanced Design

INDUSTRY-LEADING COOLING CAPACITY

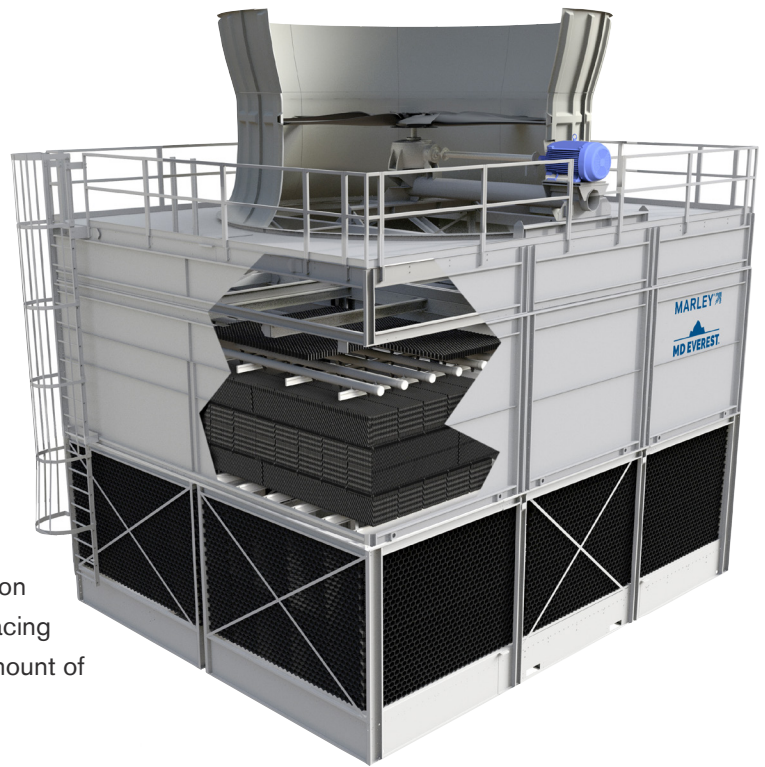
With cooling capacities up to 3,790 tons, the MD Everest is an ideal one-to-one match for large chillers. Additionally, the higher cooling capability can reduce the total number of cells needed, reducing installation and capital costs.

LAYOUT FLEXIBILITY

Counterflow design allows the MD and MD Everest to be arranged in back-to-back or inline configurations depending on the space available and desired piping or basin needs. If spacing allows, a back-to-back configuration can deliver the same amount of cooling as inline with only half the linear feet.

ADAPTS TO VARYING WATER QUALITY

Whether the water source is very clean and treated or pulled from a river with simple filters, the MD and MD Everest can be outfitted with a range of fill types to deliver peak cooling capacity while minimizing fouling potential.



Model	Cooling Capacity*	Maximum Flow Rate	Length	Width	Height
MD5006	166 tons (730 kW)	498 gpm (113 m ³ /hr)	8'-5" (2.5m)	5'-11" (1.8m)	10'-5" (3.1m) to 12'-5" (3.7m)
MD5008	255 (1121 kW)	765 gpm (174 m ³ /hr)	8'-11" (2.7m)	8'-5" (2.5m)	10'-9" (3.3m) to 12'-9" (3.9m)
MD5010	360 tons (1583 kW)	1080 gpm (245 m ³ /hr)	11'-11" (3.6m)	8'-5" (2.5m)	11'-2" (3.4m) to 13'-2" (4.0m)
MD5016	500 tons (2198 kW)	1500 gpm (341 m ³ /hr)	11'-11" (3.6m)	11'-10" (3.6m)	13'-10" (4.2m) to 15'-10" (4.8m)
MD5017	554 tons (2435 kW)	1662 gpm (377 m ³ /hr)	14'-1" (4.3m)	12'-0" (3.6m)	14'-8" (4.5m) to 16'-8" (5.1m)
MD5018	756 tons (3323 kW)	2268 gpm (515 m ³ /hr)	17'-11" (5.4m)	11'-10" (3.6m)	15'-2" (4.6m) to 17'-2" (5.2m)
MD5027	2387 tons (10457 kW)	8537 gpm (1939 m ³ /hr)	30'-0 (9.3m)	24'-2" (9.3m)	28'-9" (8.8m) to 31'-9" (9.7m)
MD5030	2653 tons (11663 kW)	8702 gpm (1976 m ³ /hr)	30'-0 (9.3m)	30'-0 (9m)	30'-5" (9.2m) to 37'-5" (11.4m)
MD5033	3023 tons (13289 kW)	10470 gpm (2378 m ³ /hr)	36'-0" (11m)	30'-0 (9m)	28'-5" (8.6m) to 37'-5" (11.4m)
MD5036	3790 tons (16676 kW)	12602 gpm (2862 m ³ /hr)	36'-0" (11m)	36'-0" (11m)	28'-5" (8.6m) to 39'-5" (12.0m)

* Based on 3 gpm/ton at 95°F HW—85°F CW—78°F WB; varies depending on configuration

MarleyGard® Water and Tower Protection Solutions

Healthy cooling tower water conditions and routine tower maintenance are crucial for overall cooling efficiency. Through proactive monitoring and treatment, MarleyGard Water and Tower Protection Solutions help cooling tower operators take a preemptive approach to challenging issues, including scale, corrosion, microorganisms and water conservation. Keep your tower running cooler for longer with MarleyGard.

WATERGARD® (pictured)

Pre-conditions makeup water to enable operation at increased cycles of concentration

BASIN FILTER

Prevents nozzle clogging by capturing solids in the hot water basin

AIR INLET SCREEN

Protects fill and cold water basin from large air-borne debris, such as leaves and litter

BASIN SWEEPER PIPING

Removes solids in the cold water basin to prevent accumulation and potential biological growth

SUNSHIELD BASIN COVER

Shields the cold water basin from sunlight that can contribute to algae growth

LOW-FLOW NOZZLE CUPS

Manages variable flow while minimizing risk of icing in freezing weather

EXTEND WARRANTY

Customizable extended materials and/or labor warranties for additional tower protection

EXTEND SERVICE

Inspections and preventative maintenance performed by Marley professionals



OEM Components and Accessories

Marley has the cooling tower components, inventory, service network and performance quality to maintain a variety of tower designs and brands.

We design and manufacture cooling tower parts exclusively for cooling tower service, so we understand the importance of durable, high-quality replacement components capable of withstanding harsh tower environments.

Marley-engineered aftermarket parts are reliable and designed to optimize total system performance and help extend cooling tower service life. When you consider performance, certification, reliability and convenience, Marley makes long-term sense.

GEAREDUCER, DRIVES AND MOTORS

Marley offers a wide range of power transmission technologies designed specifically for cooling tower operation, including the Marley Geareducer[®], belt drive systems and direct drive motors.

ULTRA QUIET AND LOW SOUND FANS

Designed for efficient and low-sound operation, Marley fans increase cooling tower performance with superior air flow and pressure capability at reduced speed.

HIGH EFFICIENCY FILM FILLS

A wide range of fill media for counterflow and crossflow towers capable of providing high-performance heat transfer for any water quality.

TOWER ACCESS & SAFETY SOLUTIONS

Optional equipment that allows for safer and easier maintenance access available on new or existing towers: platforms, safety cages, access doors, interior walkways, and more.





Learn More Scan the QR code or visit spxcooling.com/applications/data-centers/

SPX COOLING TECH, LLC
7401 WEST 129 STREET
OVERLAND PARK, KS 66213 USA
913 664 7400 | spxcooling@spx.com
spxcooling.com

DC-25 | ISSUED 8/2025
©2025 SPX COOLING TECH, LLC | ALL RIGHTS RESERVED
In the interest of technological progress, all products are subject to design and/or material change without notice.

